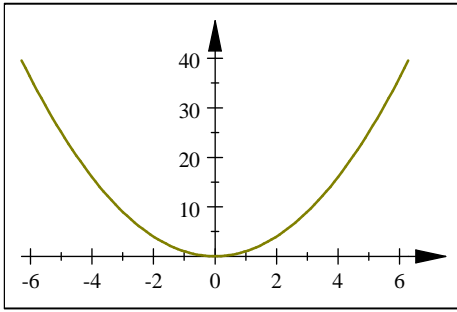
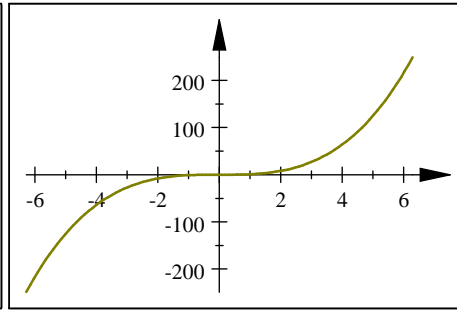


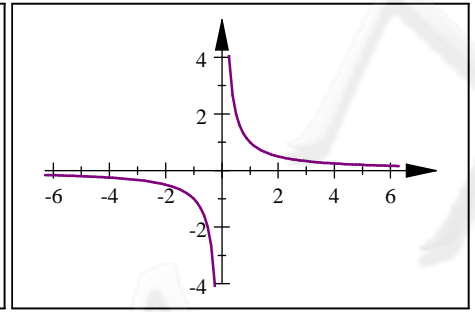
LE FUNZIONI FONDAMENTALI



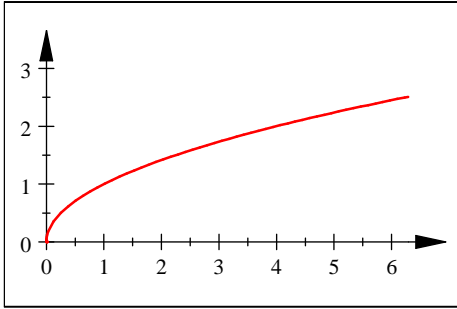
$y = x^n$ con n pari



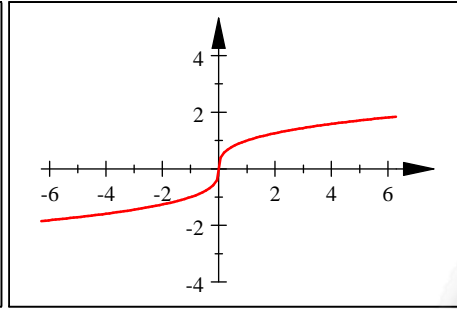
$y = x^n$ con n dispari



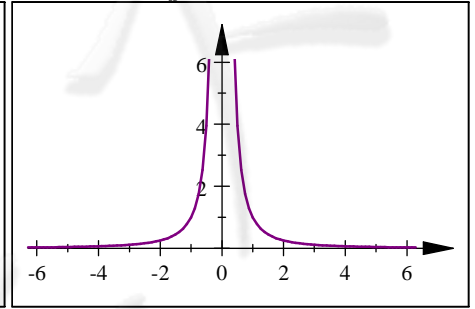
$y = \frac{1}{x^n}$ con n dispari



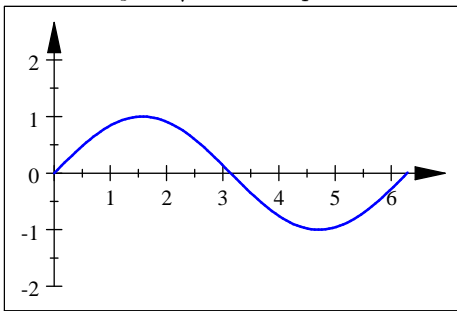
$y = \sqrt[n]{x}$ con n pari



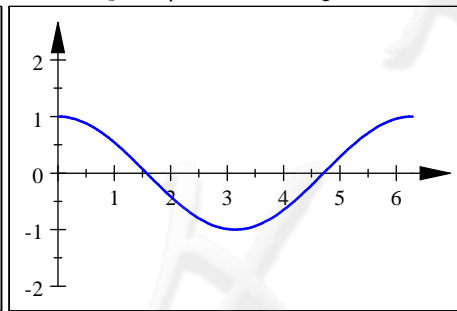
$y = \sqrt[n]{x}$ con n dispari



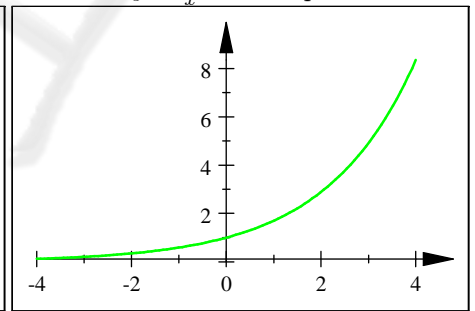
$y = \frac{1}{x^n}$ con n pari



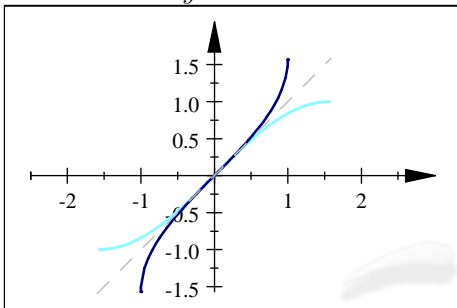
$y = \sin x$



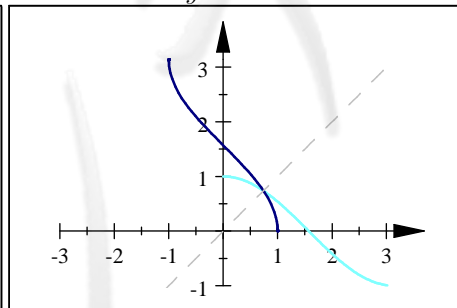
$y = \cos x$



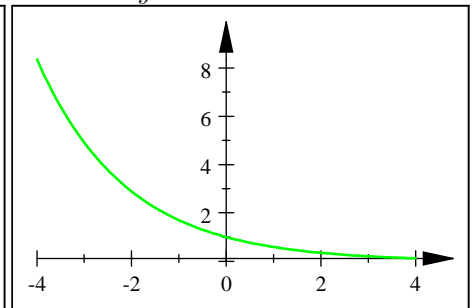
$y = a^x$ con $a > 1$



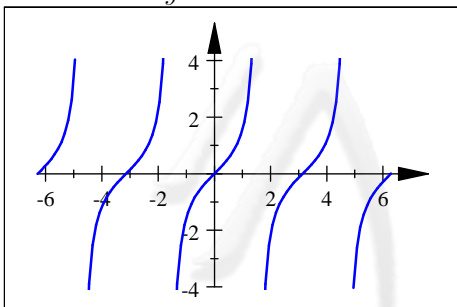
$y = \arcsin x$



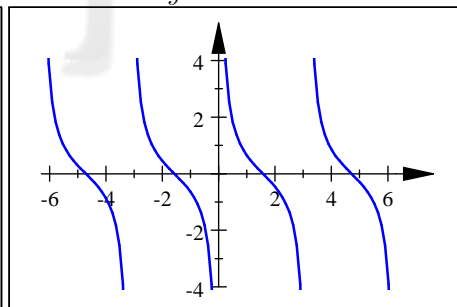
$y = \arccos x$



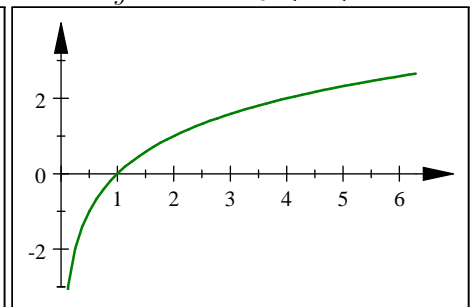
$y = a^x$ con $0 < a < 1$



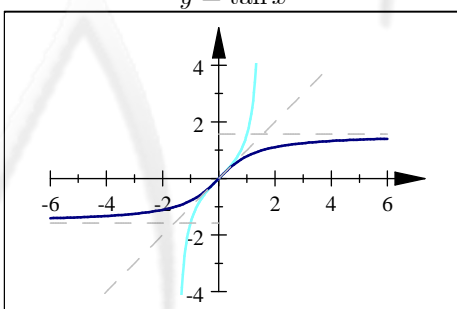
$y = \tan x$



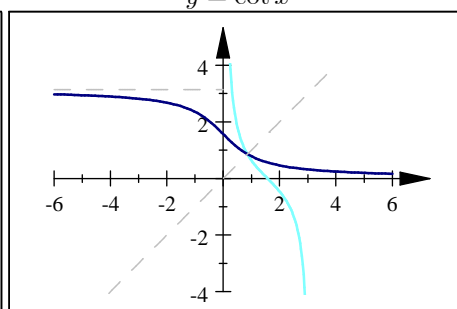
$y = \cot x$



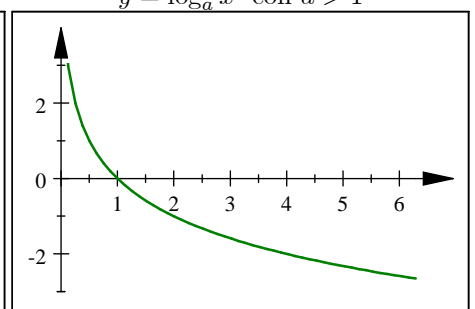
$y = \log_a x$ con $a > 1$



$y = \arctan x$



$y = \operatorname{arccot} x$



$y = \log_a x$ con $0 < a < 1$